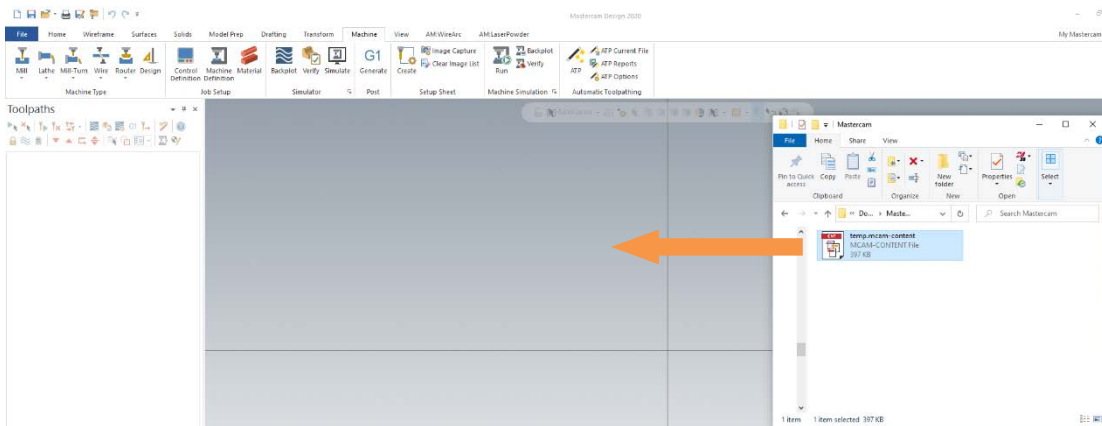


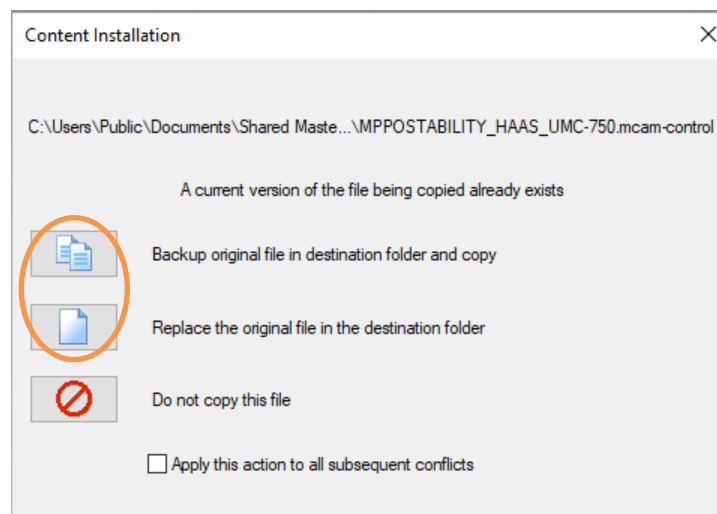
# Post/Machine Installation

## Mastercam 2020 and Newer

1. Save the emailed **.mcam-content** file to your computer.
2. Launch the version of Mastercam for which you would like to install the post files.
3. Drag and drop the **.mcam-content** file from your computer into Mastercam:

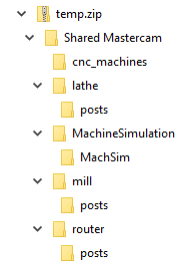


4. Mastercam will automatically copy all relevant files from the **.mcam-content** file into the default Mastercam folders. You may be prompted to overwrite existing files if they exist. Select the icon next to either **“Backup original file”** or **“Replace the original file”** to replace any existing files and ensure you are running the latest version of your post:

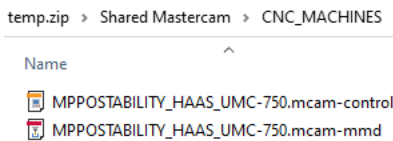


## Mastercam 2019 and Prior

1. Save the emailed file and then change the file extension from **.mcam-content** to **.ZIP**.
2. The files in this folder can now be viewed with Windows default file extraction software. There are several directories stored within the **.ZIP** file. Note you will only see the folders that contain files for your specific machine (e.g. if the machine is a mill, you will NOT see the lathe or router sub directories)



3. Navigate to the **CNC\_MACHINES** directory in the **.ZIP** file. In the example below we have two files in this directory: the machine definition (.mcam-mmd) and the control definition (.mcam-control):



Note your machine definition file extension will vary based on your Mastercam version and which product you are running.

4. Copy the Machine and Control Definition files to the default shared Mastercam directory:  
**C:\Users\Public\Documents\[Mastercam Directory]\CNC\_MACHINES**

Where **[Mastercam Directory]** is set based on the version of Mastercam you are running:

Mastercam Version	[Mastercam Directory]
X7	shared mcamx7
X8	shared mcamx8
X9	shared mcamx9
2017	shared Mcam2017
2018	shared Mcam2018
2019	shared Mcam2019



## Mastercam 2019 and Prior continued...

---

5. The post files (**.pst/.mcpost** and **.psb/.mcbpost**) and the post license (**.dat**) then need to be copied to the appropriate directory. The location of the folder these files are to be copied to depends on the product the post is designed to run with:

**C:\Users\Public\Documents\[Mastercam Directory]\[Product]\Posts**

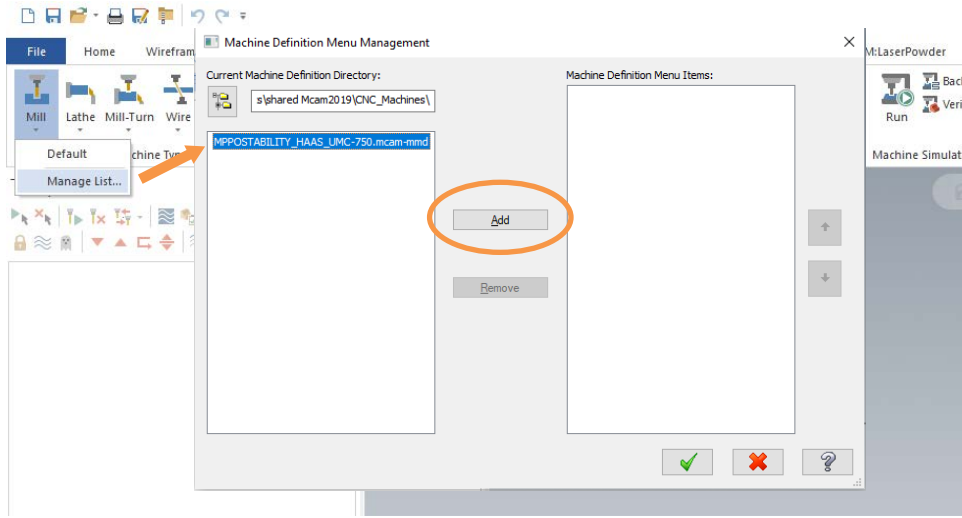
Where **[Mastercam Directory]** matches the version from the above table in step 4 and **[Product]** is the folder for the Mastercam Product the post is associated with. The location of the post in the ZIP file also depends on the product. If unknown, this can be determined by the file extension of the Machine Definition:

Mastercam [Product]	Machine Definition File Extensions	Zip File Location
Mill	.mmd-7/8/9, .mcam-mmd	Shared Mastercam/mill/posts
Lathe	.lmd-7/8/9, .mcam-lmd	Shared Mastercam/lathe/posts
Router	.rmd-7/8/9, .mcam-rmd	Shared Mastercam/router/posts

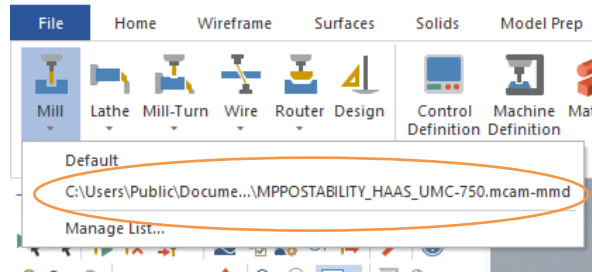


## Loading the Machine in Mastercam

1. Once all files have been copied to the appropriate directories, launch Mastercam and add the machine to your machine list by selecting **Manage List** under the appropriate product, selecting the new Machine Definition and selecting the **Add** button:



2. The machine will now be available from the Machine Type drop down:



Videos of these steps with further explanation can be found on our website  
<http://www.postability.com/installation>